



ARCHIVED - Archiving Content

Archived Content

Information identified as archived is provided for reference, research or recordkeeping purposes. It is not subject to the Government of Canada Web Standards and has not been altered or updated since it was archived. Please contact us to request a format other than those available.

ARCHIVÉE - Contenu archivé

Contenu archivé

L'information dont il est indiqué qu'elle est archivée est fournie à des fins de référence, de recherche ou de tenue de documents. Elle n'est pas assujettie aux normes Web du gouvernement du Canada et elle n'a pas été modifiée ou mise à jour depuis son archivage. Pour obtenir cette information dans un autre format, veuillez communiquer avec nous.

This document is archival in nature and is intended for those who wish to consult archival documents made available from the collection of Public Safety Canada.

Some of these documents are available in only one official language. Translation, to be provided by Public Safety Canada, is available upon request.

Le présent document a une valeur archivistique et fait partie des documents d'archives rendus disponibles par Sécurité publique Canada à ceux qui souhaitent consulter ces documents issus de sa collection.

Certains de ces documents ne sont disponibles que dans une langue officielle. Sécurité publique Canada fournira une traduction sur demande.



CANADA



**NATIONAL
PAROLE
BOARD**



DECEMBER 31 1965

NATIONAL PAROLE BOARD

OFFICE OF
THE CHAIRMAN

To the Honourable L. T. Pennell
Solicitor General

Sir:

The undersigned has the honour to present the
accompanying report of the National Parole Board for
the year ending December 31, 1965.

Respectfully submitted,



T. G. Street

Copyright of this document does not belong to the Crown.
Proper authorization must be obtained from the author for
any intended use

Les droits d'auteur du présent document n'appartiennent
pas à l'État. Toute utilisation du contenu du présent
document doit être approuvée préalablement par l'auteur.

Ottawa, November 1966

NATIONAL PAROLE BOARD

Chairman – T. George Street, Q.C.

Members – Edouard Dion, Q.C.

J. Alex Edmison, Q.C.

Miss Mary Louise Lynch

George A. Tremblay

Secretary – Frank P. Miller

TABLE OF CONTENTS

| | Page |
|--|------|
| INTRODUCTION | |
| General | 1 |
| Success rate | 1 |
| THE NATIONAL PAROLE BOARD | |
| Board Policy..... | 1 |
| THE NATIONAL PAROLE SERVICE | |
| Headquarters..... | 2 |
| Field | 2 |
| PAROLES GRANTED | |
| Graph | 3 |
| PAROLE | |
| What does it mean? | 4 |
| DEFINITIONS..... | 4 |
| MINIMUM PAROLE | 5 |
| SPECIAL NARCOTIC ADDICTION PROJECT | 5 |
| SUPERVISION | 6 |
| PAROLE VIOLATIONS..... | 6 |
| REVOCATIONS AND FORFEITURES | 7 |
| PUBLIC SAVING | 8 |
| ACKNOWLEDGEMENTS | 8 |
| STATISTICS..... | 8 |

INTRODUCTION

General

During 1965, the National Parole Board granted 2,302 paroles.

This figure includes 86 temporary paroles and 305 minimum paroles.

Of the total 10,868 cases considered by the Board, parole was granted to 23% as compared to 21% in 1964.

There were 7,342 inmates in federal penitentiaries eligible to be considered for parole in 1965. Of these, 1,965 were reviewed automatically although they did not apply.

There were 3,067 inmates of federal prisons who did apply and 756 of them were granted parole.

In provincial prisons, where cases are not reviewed unless application is made, 3,771 inmates were considered and of these 1,020 or 27% were granted parole.

Therefore, of the 6,838 inmates who applied, parole was granted to about 31%.

Success Rate

During the first seven years of operation, The Parole Board granted parole to 14,169 inmates, not including those given gradual release. Of these, 792 had their paroles revoked for misbehaviour or commission of a minor offence and 779 forfeited parole for commission of an indictable offence and were returned to prison. This means an average failure rate, statistically speaking, of 11.7 per cent, considered one of the lowest in the world.

THE NATIONAL PAROLE BOARD

The National Parole Board is composed of a Chairman and four members, appointed by the government in council, each for a period of ten years.

It is an autonomous body with the chairman reporting to the Solicitor-General.

The Parole Board is assisted by a staff known as the National Parole Service.

Board Policy

The policy of the Parole Board is, as far as possible; to encourage inmates to become law-abiding citizens and to assist them to do so by granting parole; to deal with the offenders as individuals not as members of a group; to judge each case objectively according to its merits and circumstances; to be flexible and avoid the use of any rigid or arbitrary rules of practice; to be practical, realistic and businesslike in dealing with offenders; to avoid any suggestion that parole means pampering inmates or that it involves the use of leniency or clemency; to consider each case from the point of view that what the inmate is apt to do in the future is more significant than what he has done in the past; to provide adequate

supervision to ensure protection of the public and assistance for parolees; and emphasize correction, and reformation as the purposes of punishment, rather than vengeance or retribution.

THE NATIONAL PAROLE SERVICE

The staff of the National Parole Board, which is known as the National Parole Service, is divided between the headquarter in Ottawa and the 13 regional offices across Canada.

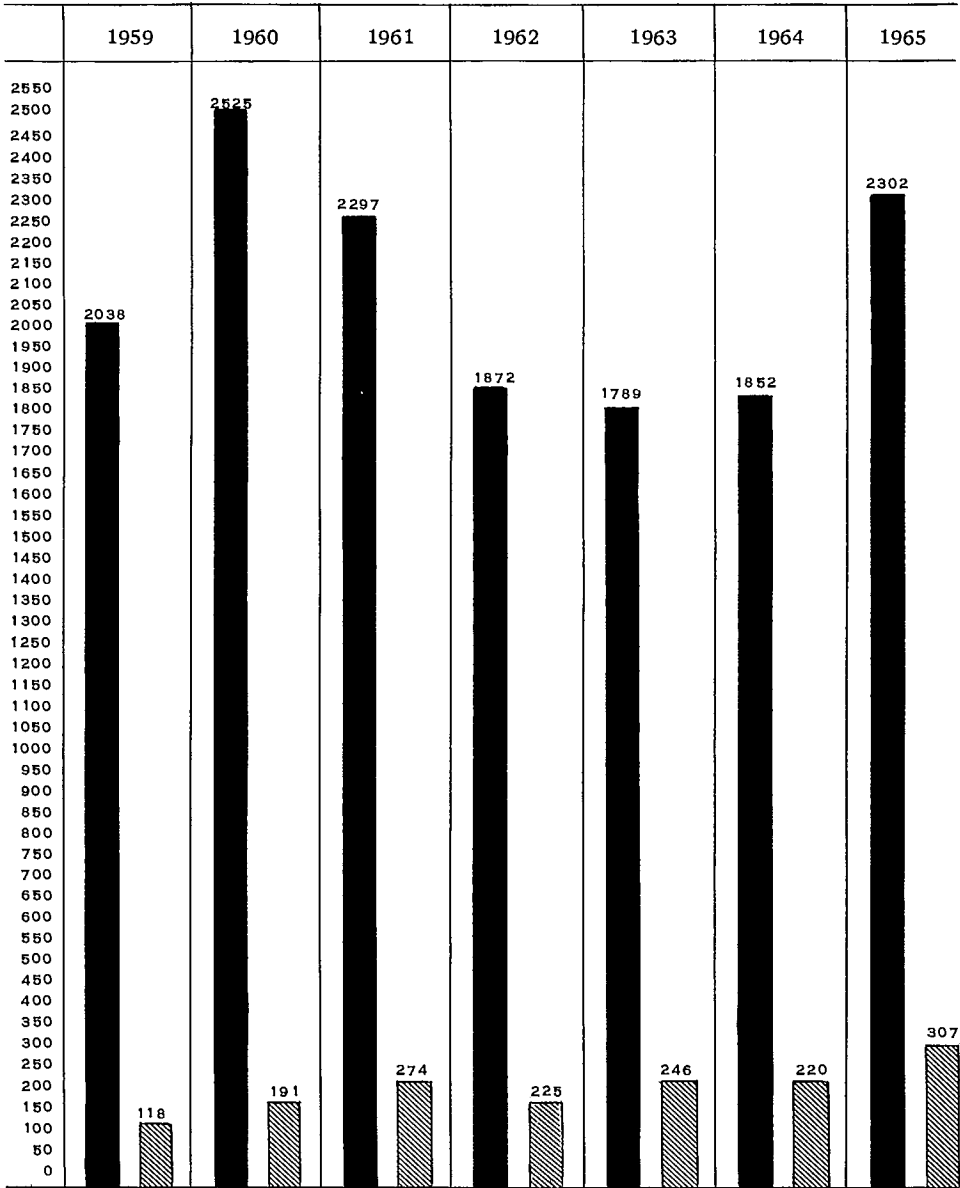
During 1965 there was a total staff of 116, an increase of 11 since 1964. At headquarters 55 persons were employed.



The staff includes the Executive Director who is also Secretary to the Board his assistant, who is also chief of field services; and administrator; chief of case preparation and parole supervision; supervisors of the three geographical sections of the country (western, central and eastern) supervisors for the registry and stenographic pool and an information officer.

There is also a staff of field officers in 13 regional offices which are strategically located in the large urban areas near the major penal and reform institutions. They are located in Vancouver, Victoria, Calgary, Edmonton, Prince Albert, Hamilton, Toronto, Kingston, Montreal, Quebec City, Moncton and Halifax. Three of these, Calgary, Hamilton and Victoria were opened in 1965 and more regional offices are expected to be opened in the near future.

PAROLES GRANTED

Graph



This graph shows paroles granted  and paroles  or revoked and forfeited for the years 1959 to 1965.

PAROLE

What does it mean to be on parole?

A prisoner selected for parole must sign a parole agreement. The conditions include that he be under authority of a parole service representative; to report on regular basis to the representative or local police; accept supervision, assistance or instruction by the supervisor; maintain steady employment; obtain permission to make any change in place of residence, employment or other major decisions and to obey the law.

There may be special conditions added, such as abstaining from alcoholic beverages or keeping away from certain individuals who may be considered a bad influence.

As the parolee continues under supervision and shows improvement, some conditions of his parole may be removed or changed to allow him more freedom.

DEFINITIONS

Immediately following are explanatory definitions of most of the terms used in the parole service.

Definition of Terms

No action: a previous decision is not changed in the light of further developments or representations;

Parole Cancelled: the cancellation before execution of a Board order of a release on parole;

Parole Continued: the Board orders the continuance of a parole which has been suspended;

Parole Deferred: parole is refused, but the case is to be reviewed at a future date, either because it is considered worthy, or is required by the regulations

Parole Denied; parole refused and no further review of the case is contemplated because the sentence expires within two years;

Parole for Deportation: the applicant is being deported and includes voluntary departure from the country. Supervision is not arranged in these cases;

Parole Forfeited: the automatic forfeiture of a parole resulting from the committing of an indictable offence during the parole period;

Parole Granted: includes an ordinary parole, a short parole, or one for deportation, or one with a gradual release or a temporary parole;

Parole Modified: the terms or conditions of a Parole Certificate are changed after parole has been granted;

Parole Reduced: all terms and conditions are removed except that a parolee is still liable to forfeiture upon commission of an indictable offence. It is usually given only to those on parole for life;

Parole Reinstated: a forfeited parole may be reinstated, such as when the offence is not serious and the court declined to sentence the parolee to prison for committing the offence which caused the automatic forfeiture of the parole;

Parole Revoked: an order of the Board terminating a parole for misbehavior or breach of the conditions of the Parole Agreement;

Parole Revoked and Forfeited: refers to the case in which an order of revocation has to be cancelled and replaced by an order of forfeiture, when the parole was already forfeited at the time of the revocation;

Parole Suspended: refers only to cases where the suspension is ordered by the Board, rather than the Regional Representative;

Parole with Gradual: is the permission given to an inmate to leave the institution, with or without escort, for short periods prior to his final release on parole, to assist in his readjustment to life in the community;

Short Parole: usually for less than 30 days, to assist in the rehabilitation of the inmate because of an offer of steady employment. Supervision is not usually arranged, because it is either not necessary or possible:

Temporary Parole: is the same as a parole with gradual but just preceding discharge at expiration, rather than release on parole.

MINIMUM PAROLE

The Board began a program known as minimum parole in October 1964.

Minimum parole allows a prisoner to be released one month earlier for every year of his sentence, up to a total of six months. Thus, if he is serving a two year sentence and would normally be discharged unconditionally at 16½ months, he can be released after serving only 14 months. However, he will be under supervision for at least eight months.

While this policy makes it possible for the Board to parole more inmates, the measure actually protects society to a greater degree by prolonged supervision of the offender.

During 1965 there were 305 offenders granted minimum parole. Of this number 28 forfeited parole and 25 paroles were revoked in 1965.

SPECIAL NARCOTIC ADDICTION PROJECT

The National Parole Board set up the first Special Narcotic Addict Project (referred to as SNAP) in British Columbia in 1961. A group of criminal addicts who would not normally be released on parole were in the first project.

Cooperating with the Parole Board were the Penitentiary Service, Narcotic Addiction Foundation, R.C.M. Police, the Vancouver Police and the Department of National Health and Welfare.

Results of the SNAP I experiment show that of the original group of 16 men who were paroled in 1962, only two still remain outside.

In 1964, a group of 24 addicts were paroled in SNAP II, under somewhat tighter controls.

From this group of 24, 16 are still living within the community and doing reasonably well.

Of the others, only a few had their paroles revoked because of narcotics. In comparison to previous experience, this indicates progress can be made.

In the second project, we wanted to try to deal with them outside Vancouver in areas where drugs are not easily available and also to keep them away from their former associates and other harmful influences which may have led to their addiction.

SUPERVISION

Parole supervisors are usually members of after-care agencies, provincial probation officers or National Parole Board officers. In some cases they are responsible private citizens appointed by the Board. Their duties vary from helping parolees with everyday problems to counselling, guidance, advice and ensuring that parolees do not violate any of their parole conditions. Supervisors must report any infraction if they occur.

Supervision involves both guidance and surveillance; the casework type of approach and the authoritative approach. After-care agencies often help parolees as well as discharged inmates, find employment.

Regional representatives of the National Parole Board interview parole applicants, brief them about parole, assist them with their applications, the preparation of post release plans and assess them as parole risks. They are stationed in 13 cities across Canada so they can provide expedient and effective service in their respective areas.

The Regional representative has authority over all parolees in his area, with jurisdiction to modify certain terms of the Certificate of Parole and can issue Warrants of Suspension. In some cases he directly supervises parolees and is responsible for liaison with government officials, provincial authorities, courts, police, penal institutions, probation officers and aftercare or social agencies.

These regional officers are in constant touch with the Board and implement the policy of the Board in their areas. They are always available to the general public and all authorities in the correctional field.

By ensuring that parolees behave within society, the protection of the public is assured.

PAROLE VIOLATION

A parole may be interrupted or terminated before its normal expiry date by suspension, revocation or forfeiture.

SUSPENSION

A warrant of Suspension and Apprehension is issued in the majority of cases by a Regional representative. This is done when the arrest of a parolee is considered necessary to prevent a breach of any term of parole. Once apprehended, the parolee is remanded to custody pending the decision of the Board either continue or revoke parole. As knowledge and experience has grown, suspension has been used increasingly. In 1959 only 18 suspensions were issued, compared to 306 in 1965.

Appreciation is due for the close and efficient co-operation of the R.C.M. Police and the courts in this regard.

REVOCATIONS AND FORFEITURES

A parole is automatically forfeited once the parolee is convicted of an indictable offence carrying a sentence of two years or more, committed while he was on parole. This is so, even though he may not be convicted of such an offence until after his parole has expired.

Revocation of parole results from many causes. Here are a few:

Leaving the area without permission (whereabouts unknown)

Lack of co-operation with the supervisor.

Misconduct.

Excessive use of liquor.

Refusal to work, or leaving employment without permission.

Neglect to provide family support.

Failure to report to police.

Regulations such as these serve two purposes. They give the parolee guidelines by which to plan his rehabilitation. They also protect the public if the parolee is not living up to the standards set for him.

This is in contrast to an inmate released at the end of his sentence who is then freed of any control.

The supervision of a parolee often means the difference between rehabilitation or a return to crime. An examination of the material reveals that of those whose paroles were revoked or forfeited

- (a) the average age was 28
- (b) 57% had been convicted of break, enter and theft, or receiving; 13% for robbery; 14% for forgery; 3% for sex offences and 9% miscellaneous offences.
- (c) apart from four on life terms, the average length of sentence was 29 months with an average time served of 19 months.
- (d) The majority, 74% were in federal penitentiaries while 26% were in provincial institutions.
- (e) The average time on parole before violation was 6 months.
- (f) At least 61% had one previous similar offence; 20% had one previous dissimilar offence and 19% had no previous convictions.
- (g) some 44% had liquor problem
- (h) 32% had fair family backgrounds; 22% poor family backgrounds; 18% came from broken homes; 21% estimated good families and 7% were not known.
- (i) family support was assured 62% and 67% had homes to return to
- (j) 39% were assured of financial assistance and 30% had offers of employment.

PUBLIC SAVING

Parole is not only effective in the protection of the public and rehabilitation of the released offender but is also economical in terms of public savings to the taxpayer.

It costs \$2,500 a year to keep one man in prison perhaps another \$2,500 a year for his family on welfare another \$3,000 (minimum) in loss of his wages.

There are on the average 1,300 persons on parole in Canada at all times. If they were all in prison this would represent a cost (including loss to the taxpayer) of \$8,000 x 1,300 = \$10,400,000.

The cost of maintaining the parole system is about \$750,000 a year.

Therefore, there is a savings of some \$9,650,000 annually to the taxpayer by keeping these people on parole.

It appears then that it is not a matter of cost in maintaining a parole system but that we cannot afford to be without it.

ACKNOWLEDGEMENTS

The National Parole Board is grateful to all those who assist in its work. These include the federal and provincial authorities, the judiciary, R.C.M. Police, provincial and municipal police forces, institutional staff, provincial probation and parole officers, Dominion Bureau of Statistics, aftercare agencies, the general public and the Board's own staff.

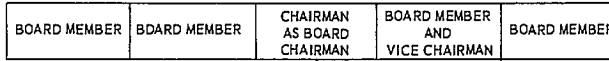
STATISTICS

This year's report, because of a changeover to a bilingual booklet, does not contain the extensive statistics compiled annually by the Dominion Bureau of Statistics.

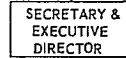
However, for those interested, a separate publication of statistics is available.

This booklet and other information may be obtained by writing the Information Officer, National Parole Board, Ottawa, Ontario, Canada.

NATIONAL PAROLE BOARD



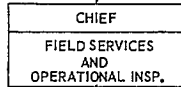
NATIONAL PAROLE SERVICE



INFORMATION OFFICER

RESEARCH OFFICER
CLEMENCY AND
LEGAL OFFICER

ASSISTANT
DIRECTOR



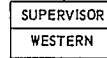
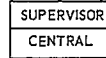
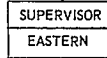
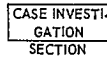
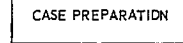
Field Offices

CHIEF OF FIELD SERVICES & OPERATIONAL INSPECTIONS

RESPONSIBLE FOR:

1. GENERAL OPERATION OF FIELD OFFICES.
2. OPERATIONAL INSPECTIONS OF ALL UNITS OF PAROLE
3. STAFF DEVELOPMENT & TRAINING.
4. CO-ORDINATION OF EXPERIMENTAL PROGRAMS.
5. ACTING FOR EXECUTIVE DIRECTOR IN HIS ABSENCE.

CHIEF



Parole Analysts

Parole Analysts

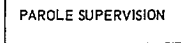
Parole Analysts

CHIEF OF CASE PREPARATION DIVISION

RESPONSIBLE FOR:

1. CO-ORDINATION, DIRECTION, CASE PREPARATION UNITS.
2. CONTRDL CASE PREPARATION FUNCTION - FIELD OFFICES.
3. LIAISON COOPERATING AGENCIES.
4. PRESENTATION OF CASES TO BOARD.

CHIEF

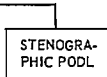
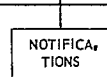
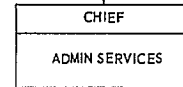


CHIEF OF PAROLE SUPERVISION DIVISION

RESPONSIBLE FOR:

1. CO-ORDINATION PAROLE SUPERVISION PROGRAM.
2. CONTROL PAROLE SUPERVISION FUNCTION FIELD OFFICES.
3. LIAISON WITH POLICE & OTHER AGENCIES.
4. PAROLE TERMINATION PROCEDURES - SUSPENSION - REVOCATION - FORFEITURE.
5. PRESENTATION OF CASES TO BOARD.

ASSISTANT
SECRETARY



ASSISTANT SECRETARY - CHIEF ADMIN SVCS

RESPONSIBLE FOR:

1. RECORDING - NOTIFICATION BOARD DECISIONS.
2. PERSONNEL - IN ALL ASPECTS - ESTABLISHMENTS - PROCEDURES, ETC.
3. FINANCE - ESTIMATES - PAYMENTS.
4. PROCUREMENT - SUPPLY - ACCOMMODATION.
5. CLERICAL SERVICES - STENO POOL - REGISTRY.

FIELD ORGANIZATION

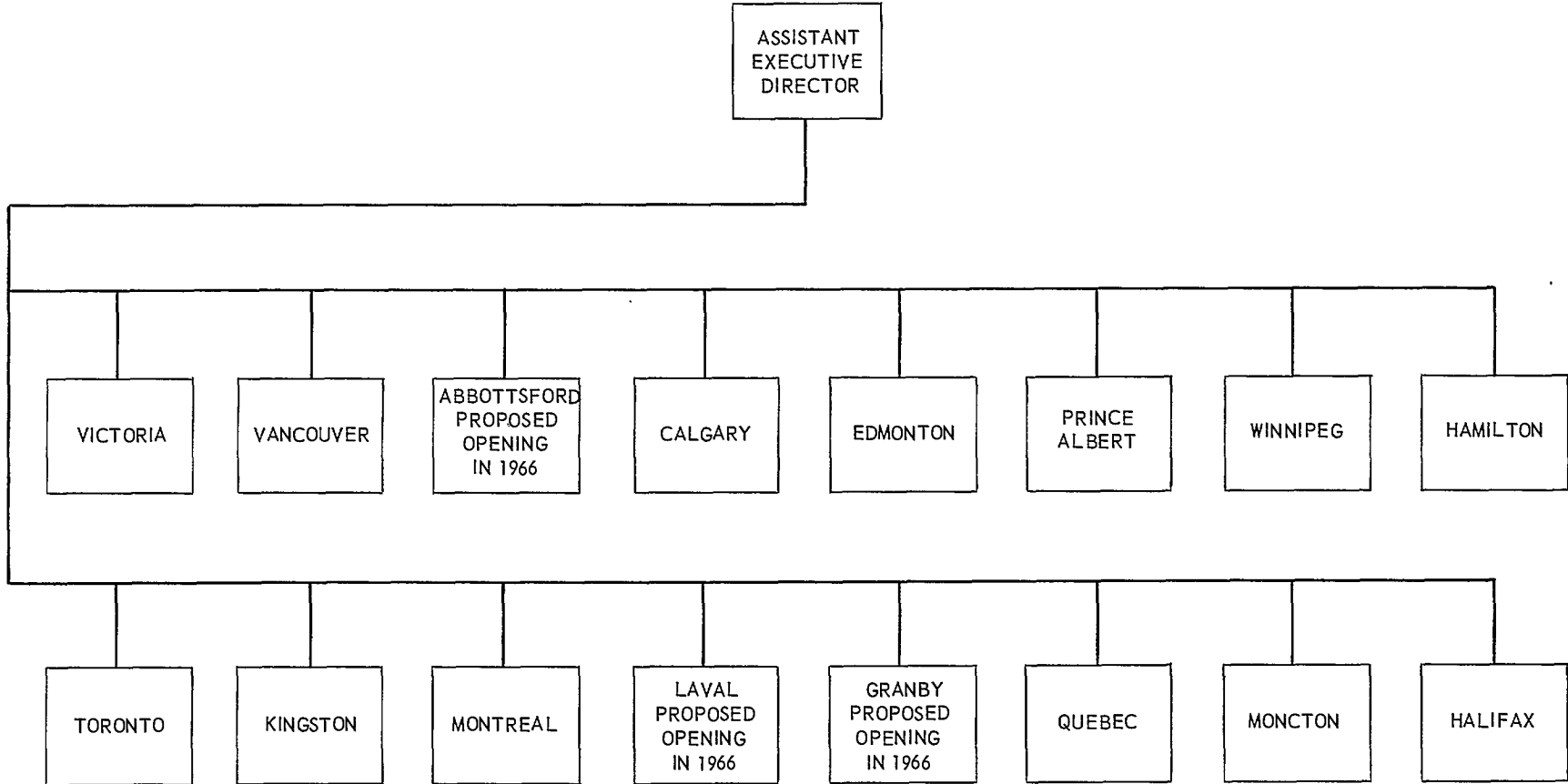


TABLE 1: COMPARATIVE STATISTICAL SUMMARY, 1965

| Board Decisions | 1961 | 1962 | 1963 | 1964 | 1965 |
|--|-------|-------|-------|-------|--------|
| Board decisions | 9,896 | 9,048 | 9,560 | 9,982 | 10,868 |
| Parole denied | 5,404 | 5,085 | 5,683 | 6,088 | 6,123 |
| Automatic review (APR) | 1,413 | 1,384 | 1,738 | 1,875 | 1,829 |
| Following application: | 3,991 | 3,701 | 3,945 | 4,213 | 4,294 |
| Parole denied | - | 3,693 | 3,944 | 4,212 | 3,696 |
| Parole Denied A.T.T. (Minimum P. in Principle) | | | | | 598 |
| Gradual Parole Denied | - | 1 | - | - | - |
| Short Parole Denied | - | 5 | - | 1 | - |
| Temporary Parole Denied | - | 2 | 1 | - | - |
| Parole Deferred | 829 | 655 | 567 | 632 | 689 |
| Automatic review (APR) | 225 | 182 | 135 | 160 | 136 |
| Following application | 604 | 473 | 432 | 472 | 553 |
| Parole Granted (All types) | 2,297 | 1,872 | 1,789 | 1,754 | 1,992 |
| Ordinary | 1,957 | 1,562 | 1,504 | 1,511 | 1,755 |
| With Gradual | 52 | 30 | 15 | 17 | 21 |
| For Deportation | 42 | 29 | 37 | 37 | 27 |
| Short | 162 | 168 | 169 | 123 | 102 |
| Minimum | | | | | |
| Gradual Parole | - | 14 | - | - | - |
| Temporary Parole | - | 69 | 64 | 66 | 87 |
| Parole Cancelled: | | | | | |
| Parole Cancelled | - | 24 | 17 | 18 | 25 |
| Parole with Gradual Cancelled | - | 2 | - | 1 | - |
| Short Parole Cancelled | - | 1 | 1 | - | - |
| Gradual Parole Cancelled | - | - | - | - | - |
| Temporary Parole Cancelled | - | 1 | - | 1 | 1 |
| Parole Revised | | | | | |
| Parole Modified | 72 | 67 | 23 | 17 | 18 |
| Parole Reduced | 8 | 19 | 12 | 11 | 17 |
| Parole Violated | | | | | |
| Parole Suspended | - | 1 | - | - | - |
| Suspended - and continued | 30 | 40 | 55 | 46 | 63 |
| - and revoked | 60 | 83 | 104 | 112 | 156 |
| - and forfeited | 1 | 28 | 19 | 36 | 46 |
| - and revoked & forfeited | 3 | 4 | - | 1 | 6 |
| Parole Revoked | 64 | 23 | 22 | 7 | 12 |
| Parole Forfeited | 144 | 86 | 101 | 64 | 92 |
| Parole Revoked and Forfeited | 2 | 1 | - | - | - |
| Parole Reinstated | 8 | 4 | 5 | 8 | 9 |
| Parole Revoked Cancelled | 4 | 4 | 1 | - | 4 |
| Forfeiture Cancelled | 1 | 1 | 1 | 2 | 1 |
| Suspended Parole Revoked Cancelled | - | - | 3 | - | - |
| Decision Reserved | 694 | 761 | 871 | 766 | 1,114 |
| No Action | 79 | 147 | 126 | 153 | 207 |
| Prohibited from Driving | | | | | |
| Suspension granted (Fav.) | 75 | 50 | 69 | 85 | 121 |
| Suspension refused (Adv.) | 97 | 84 | 84 | 159 | 172 |
| Sentence of Lashes | | | | | |
| Sentence remitted (Fav.) | - | 2 | 2 | 8 | - |
| Remission refused (Adv.) | - | 3 | 5 | 13 | - |

TABLE 2. PROPORTION OF DECISIONS BY REGION, 1961-1965

| Year | Eastern | | Central | | Western | | Canada | |
|--------------|--------------------|---------|--------------------|---------|--------------------|---------|--------------------|----------|
| | Denied Deferred | Granted | Denied Deferred | Granted | Denied Deferred | Granted | Denied Deferred | Granted |
| 1961..... | 2078-69% | 944-31% | 2470-77% | 760-23% | 1685-74% | 593-26% | 6233-73% | 2297-27% |
| 1962..... | 1940-70% | 823-30% | 2120-80% | 529-20% | 1680-76% | 520-24% | 5740-75% | 1872-25% |
| 1963..... | 2020-73% | 739-27% | 2359-83% | 482-17% | 1871-77% | 568-23% | 6250-78% | 1789-22% |
| 1964..... | 2305-79% | 629-21% | 2416-82% | 546-18% | 1999-78% | 579-22% | 6720-79% | 1754-21% |
| 1965..... | 2237-75% | 733-25% | 2458-79% | 643-21% | 2117-77% | 616-23% | 6812-77% | 1992-23% |
| Average..... | 2116-74% | 734-26% | 2365-80% | 592-20% | 1870-76% | 575-24% | 6351-77% | 1941-23% |

**TABLE 3: GENERAL STATISTICAL INFORMATION WITH RESPECT TO PAROLE AND
PAROLE VIOLATIONS, 1965**

| General Statistical Information | Parole Denied | | Parole Deferred | | Parole Granted | | Parole Violated | | Rate of Violation |
|---------------------------------------|---------------|----|-----------------|----|----------------|----|-----------------|----|-------------------|
| | Total | % | Total | % | Total | % | Total | % | % |
| Total | | | | | | | | | |
| Males..... | 4,224 | 98 | 549 | 99 | 1,697 | 96 | 296 | 96 | 17% |
| Females | 70 | 2 | 4 | 1 | 79 | 4 | 11 | 4 | 14% |
| Age: | | | | | | | | | |
| Average..... | 28.5 years | | 33 years | | 28 years | | 28 years | | |
| Less than 20 years | 707 | 17 | 41 | 7 | 262 | 15 | 39 | 13 | 14% |
| Between 20 and 30 years | 2,015 | 47 | 230 | 42 | 929 | 52 | 175 | 57 | 19% |
| Over 30 years..... | 1,463 | 34 | 271 | 49 | 568 | 32 | 87 | 28 | 15% |
| Not stated..... | 73 | 2 | 11 | 2 | 17 | 1 | 6 | 2 | 35% |
| Offence: | | | | | | | | | |
| Break and enter, theft and Rec. | 2,352 | 55 | 155 | 28 | 914 | 51 | 176 | 57 | 19% |
| Robbery..... | 383 | 9 | 170 | 31 | 245 | 14 | 39 | 13 | 16% |
| Forgery and false pretences | 566 | 13 | 30 | 5 | 175 | 10 | 44 | 14 | 25% |
| Sex..... | 302 | 7 | 73 | 13 | 156 | 9 | 10 | 3 | 6% |
| Drugs..... | 46 | 1 | 26 | 5 | 30 | 2 | 11 | 4 | 37% |
| Others | 645 | 15 | 99 | 18 | 256 | 14 | 27 | 9 | 11% |
| Place of Detention: | | | | | | | | | |
| In Provincial Institutions..... | 2,523 | 59 | 78 | 14 | 1,020 | 57 | 81 | 26 | 8% |
| In Federal Institutions | 1,771 | 41 | 475 | 86 | 756 | 43 | 226 | 74 | 30% |
| Length of sentence: | | | | | | | | | |
| Life (Commuted) | — | | 12 | | 2 | | 1 | | |
| (Straight) | — | | 7 | | 3 | | 3 | | |
| Indeterminate (D. Sex Offender) | 1 | | 41 | | — | | — | | |
| (Habitual Criminal),..... | — | | 49 | | 4 | | — | | |
| Average of all others | 19 mos. | | 74 mos. | | 24 mos. | | 29 mos. | | |
| Average time served | | | | | 14 mos. | | 19 mos. | | |
| Supervision of: | | | | | | | | | |
| Private Agencies..... | — | | — | | 918 | 53 | 179 | 59 | 19% |
| Public Services | — | | — | | 549 | 32 | 76 | 25 | 14% |
| Regional Representatives | — | | — | | 226 | 13 | 40 | 13 | 18% |
| Others | — | | — | | 38 | 2 | 8 | 3 | 21% |

TABLE 4: MAN-MONTHS SUPERVISION, 1965

| Province | Social Agencies | Public Services | Regional Reps. | Others | Total |
|---|-----------------|-----------------|----------------|--------|--------|
| Newfoundland | 83 | 100 | — | — | 183 |
| Nova Scotia | 483 | 72 | 46 | 332 | 933 |
| New Brunswick | 152 | 432 | 15 | 41 | 640 |
| Pr. Edward Island | 37 | — | — | — | 37 |
| Quebec: — Montreal | 2,935 | 35 | 2,378 | 54 | 5,402 |
| — Quebec | 959 | — | 135 | 22 | 1,116 |
| Ontario: — Toronto & Hamilton.. | 2,028 | 2,297 | 257 | 56 | 4,638 |
| — Kingston ¹ | 452 | 1,177 | 143 | 3 | 1,775 |
| Manitoba | 746 | 187 | 80 | 39 | 1,052 |
| Saskatchewan | 516 | 20 | 21 | 5 | 562 |
| Alberta — Edmonton | 576 | 163 | 25 | 20 | 784 |
| — Calgary | 246 | 20 | 1 | 1 | 268 |
| British Columbia — Vancouver and | 1,313 | 352 | 765 | 126 | 2,556 |
| Victoria | | | | | |
| Totals | 10,526 | 4,855 | 3,866 | 699 | 19,946 |

¹Includes everything west to Manitoba Border.

©
 ROGER DUHAMEL, F.R.S.C.
 Queen's Printer and Controller of Stationery
 Ottawa, 1967

Cat. No.: J91-1965