



## ARCHIVED - Archiving Content

### Archived Content

Information identified as archived is provided for reference, research or recordkeeping purposes. It is not subject to the Government of Canada Web Standards and has not been altered or updated since it was archived. Please contact us to request a format other than those available.

## ARCHIVÉE - Contenu archivé

### Contenu archivé

L'information dont il est indiqué qu'elle est archivée est fournie à des fins de référence, de recherche ou de tenue de documents. Elle n'est pas assujettie aux normes Web du gouvernement du Canada et elle n'a pas été modifiée ou mise à jour depuis son archivage. Pour obtenir cette information dans un autre format, veuillez communiquer avec nous.

This document is archival in nature and is intended for those who wish to consult archival documents made available from the collection of Public Safety Canada.

Some of these documents are available in only one official language. Translation, to be provided by Public Safety Canada, is available upon request.

Le présent document a une valeur archivistique et fait partie des documents d'archives rendus disponibles par Sécurité publique Canada à ceux qui souhaitent consulter ces documents issus de sa collection.

Certains de ces documents ne sont disponibles que dans une langue officielle. Sécurité publique Canada fournira une traduction sur demande.

## Police Reported Crime Statistics in Canada, 2013

Western and Regina Census Metropolitan Area (CMA) Details<sup>1</sup>

The Canadian Centre for Justice Statistics (CCJS) has highlighted four major categories in this report: total crime, violent crime, property crime (non-violent crime), and crime severity. The crime rate in the Regina CMA<sup>2</sup> was the lowest it has been since 1991 (the earliest year for which CCJS data is available at the CMA level). Below are some of the changes from 2012 to 2013 for the Regina CMA highlighted in the report.

	<u>2012-2013</u>	<u>10 Yr. Trend</u>
<b>1. Total Crime Rate*</b> excluding traffic-related offences	<b>-8%</b>	<b>-46%</b>
<b>2. Violent Crime Rate</b>	<b>-13%</b>	<b>-41%</b>
• Number of Homicides	9	
• Robbery Rate	-19%	-58%
<b>3. Property Crime Rate</b>	<b>-6%</b>	<b>-56%</b>
• Break and Enter	-6%	-69%
• Motor Vehicle Theft	-21%	-72%
<b>4. Police Reported Total Crime Severity Index (PRCSI)<sup>3</sup></b>	<b>-7%</b>	<b>-51%</b>
• Violent Crime Severity Index (PRVCSI)	-4%	-46%
• Non-Violent Crime Severity (NVCSI)	-8%	-53%

CCJS highlighted four specific crime classes of interest. In addition to the rates for Total Crime (excluding traffic), the report also included rates for Homicide, Robbery, Break and Enter, and Motor Vehicle Theft. **From 2012 to 2013 in the Regina CMA, the rates of Total Crime, Total Violent Crime, Robbery, Motor Vehicle Theft and Break and Enter all decreased.**

Population

In 2013, the recorded population in the Regina CMA was 234,426 according to the Canadian Centre for Justice Statistics. From 2012 to 2013, Regina's CMA population increased by 3% and 17% over the last decade.

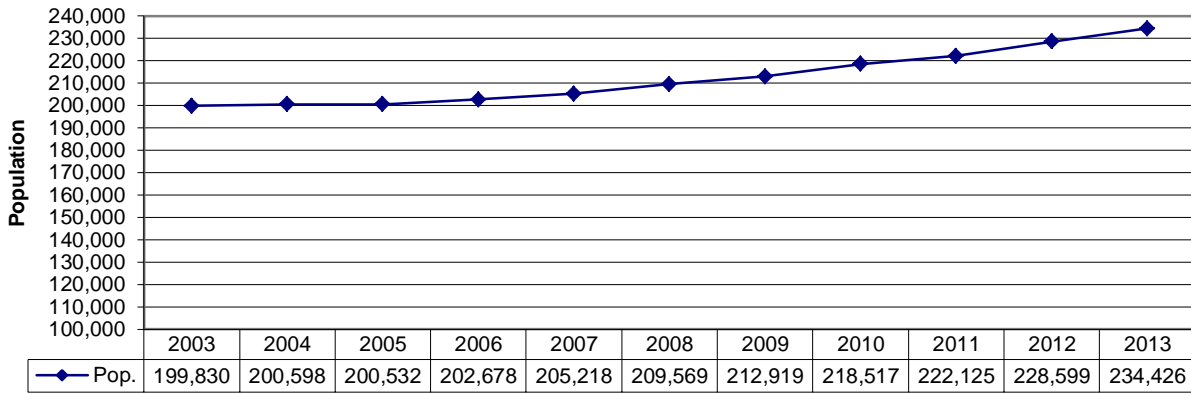
---

<sup>1</sup> Because the CCJS identifies "substantial regional differences in crime rates", this report tends to focus on the western region of Canada.

<sup>2</sup> The Regina CMA crime statistics are inclusive of the City of Regina as well as RCMP jurisdictions of Lumsden, Regina Beach, Belle Plaine, Pense, Rowatt, Richardson, White City, Pilot Butte, Balgonie, and Edenwold.

<sup>3</sup> The crime severity index differs from the crime rate in that it includes all offences that are reported to police (Measuring Crime in Canada: Introducing the Crime Severity Index and Improvements to the Uniform Crime Reporting Survey Crime Severity Index.)

10 Year Population Change for Regina CMA

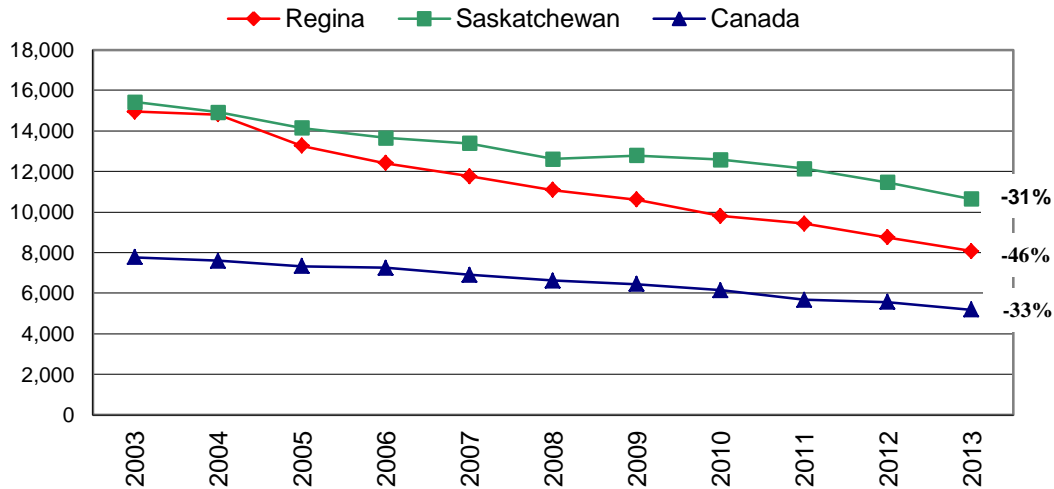


**Total Crime**

The Regina CMA reported a total crime rate (excluding traffic) of 8,069 per 100,000 population which is an **8%** decrease from the previous year<sup>4</sup> and a 46% decrease from 2003. This is the lowest rate the Regina CMA has reported in the past ten years and the lowest crime rate recorded for this area since 1991.

The crime rate reduction over the last decade in the Regina CMA was almost one and a half times the reduction for Canada generally and one and a half times more than the reduction in Saskatchewan and Canada.

**Crime Rate for Regina, Saskatchewan and Canada 2003-2013**



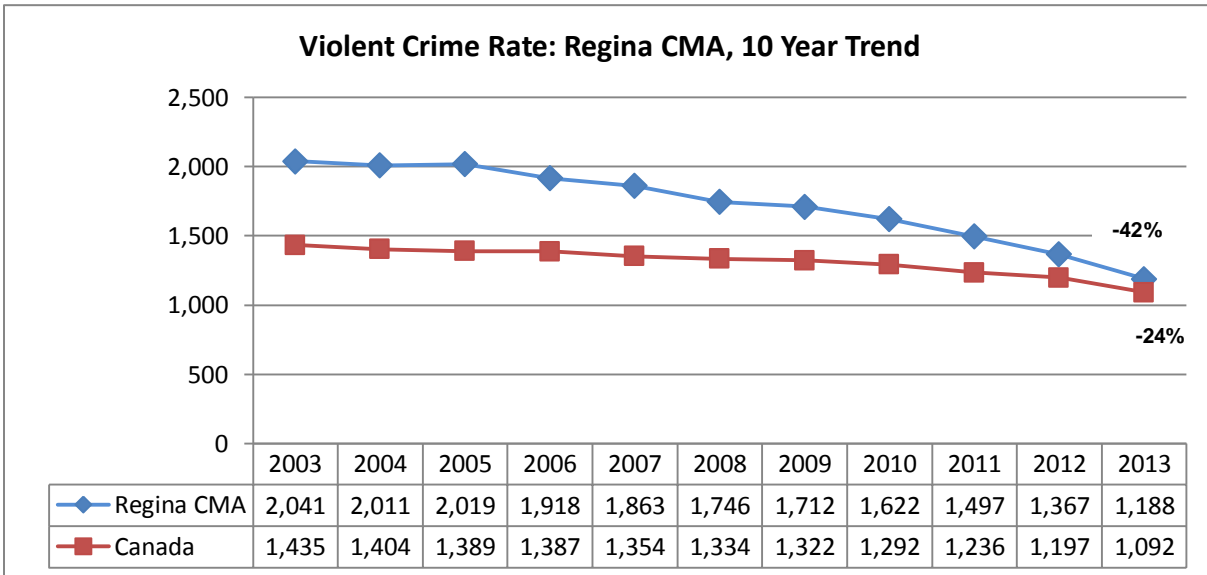
The reduction in crime rate in the Regina CMA between 2012 and 2013 was **8%** compared to a **7%** reduction for Canada.

<sup>4</sup> The crime rate includes all Criminal Code incidents but excludes all traffic, drug, and federal statute offences.

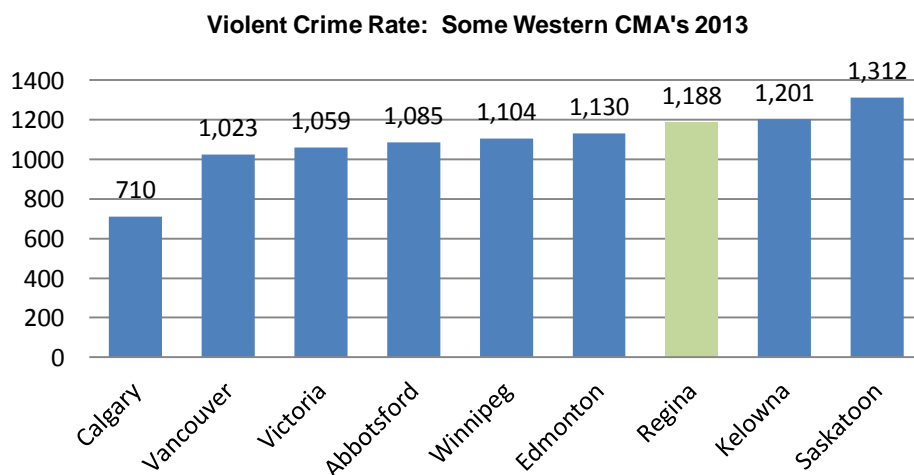
## Violent Crime

From 2012 to 2013, the rate of violent crime decreased by **13%** and 42% over the last decade. In comparison the reduction in Canada was 9% since 2012 and 24% over the last decade. Therefore, the reduction in the violent crime rate in the Regina CMA has outpaced the reduction for Canada generally.

Unlike property crimes that count the number of incidents, violent crime counts are counts of the number of victims, not the number of events. Therefore, if one robbery event occurs with three victims, the count of robbery would be 3 rather than 1. Conversely, one mischief with three victims would still be counted as one event.



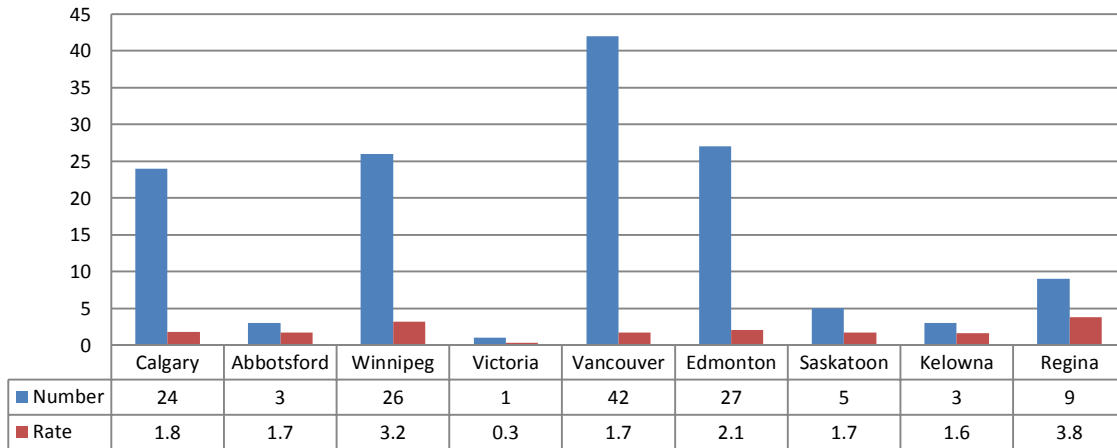
The Regina CMA ranked third in the rate of violent crime in 2013 compared to some western CMA's but **seventh** in Canada.



## Homicide

There were 9 homicides in Regina in 2013. The rate of homicide in Regina was 3.8 in 2013.

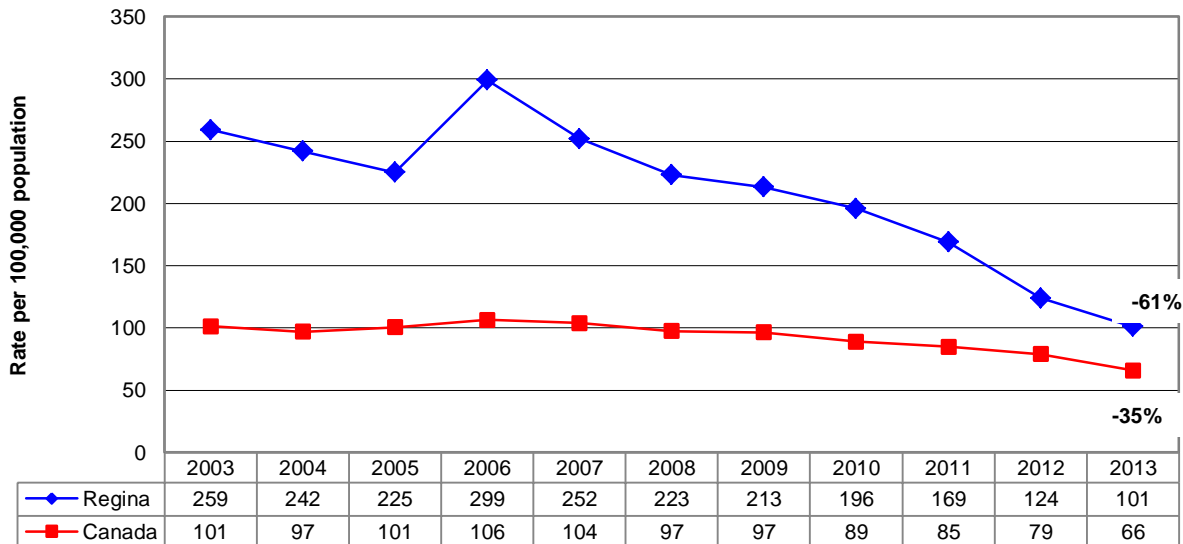
**Number and Rate of Homicide Among Select Western CMA's, 2013**



## Robbery

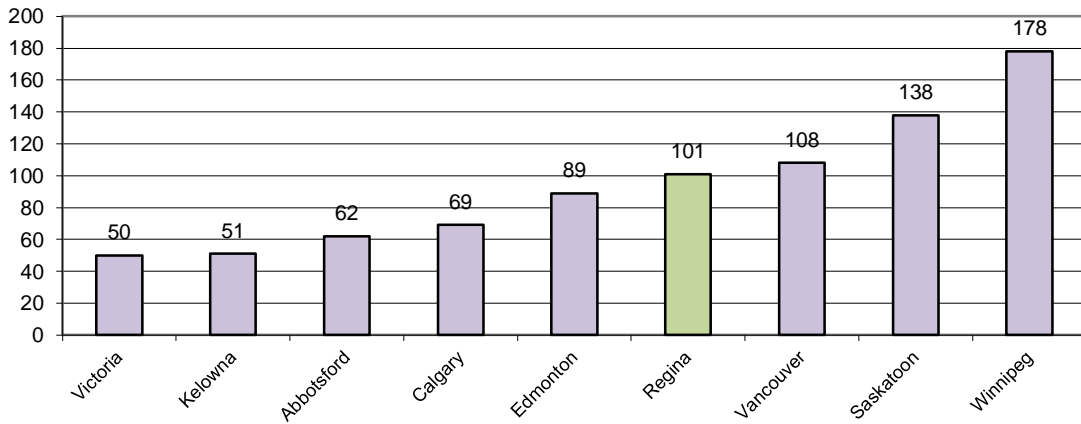
The rate of robbery decreased by **19%** from 2012 to 2013 and 61% over the last decade. In comparison, the rate of Robbery in Canada over the last decade decreased by 35%.

**Robbery Rate: Regina CMA and Canada, 10 Year Trend**



The Regina CMA reported the sixth highest rate of robbery in Canada in 2013.

**Robbery Rate: Select Western CMA's, 2013**

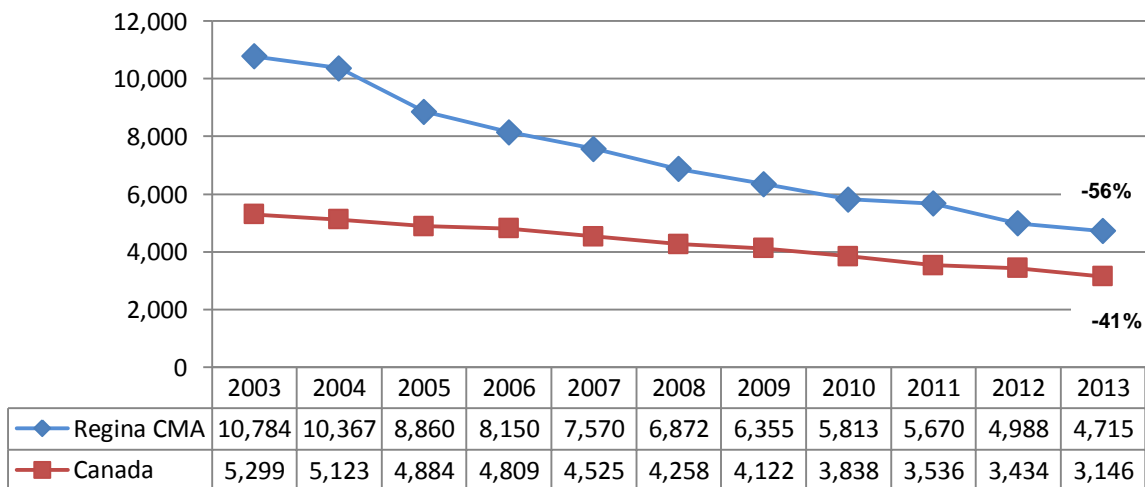


**Property Crime**

From 2012 to 2013, the rate of property crime in the Regina CMA decreased **by 6%** and 56% over the last decade. In comparison, the reduction in Canada over the last decade was 41%.

Property crime counts are based on the number of incidents reported to police, not the number of victims like in the case of violent crime.

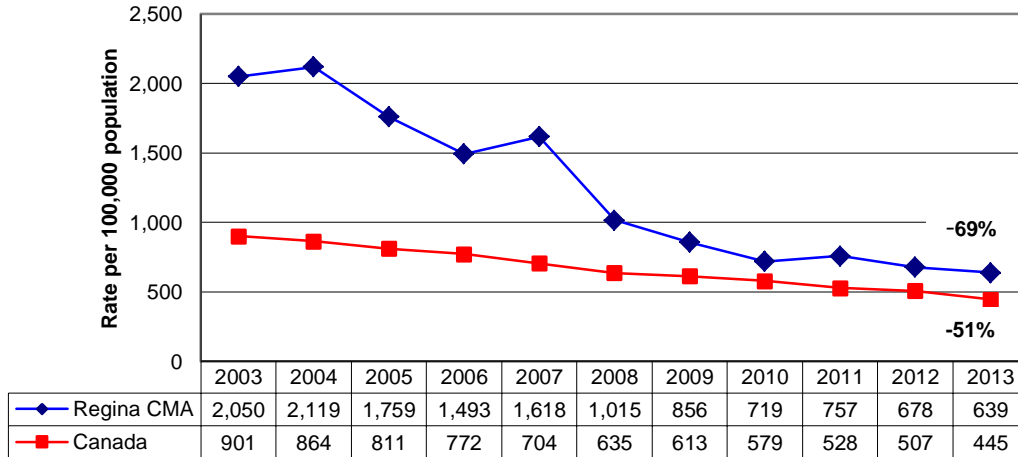
**Property Crime Rate: Regina CMA, 10 Year Trend**



## Break and Enter

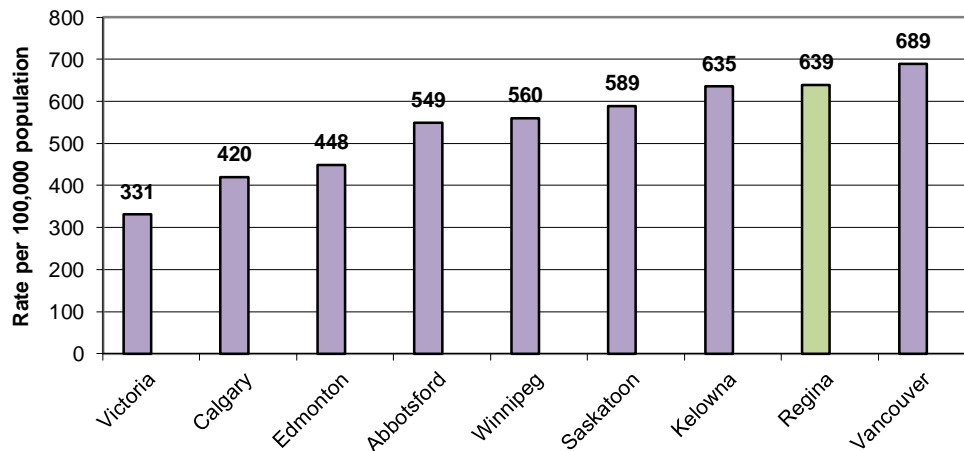
The rate of Break and Enter **decreased by 6%** from 2012 to 2013, and **-69%** since 2003.

**Break and Enter Rate: Regina CMA and Canada, 10 Year Trend**



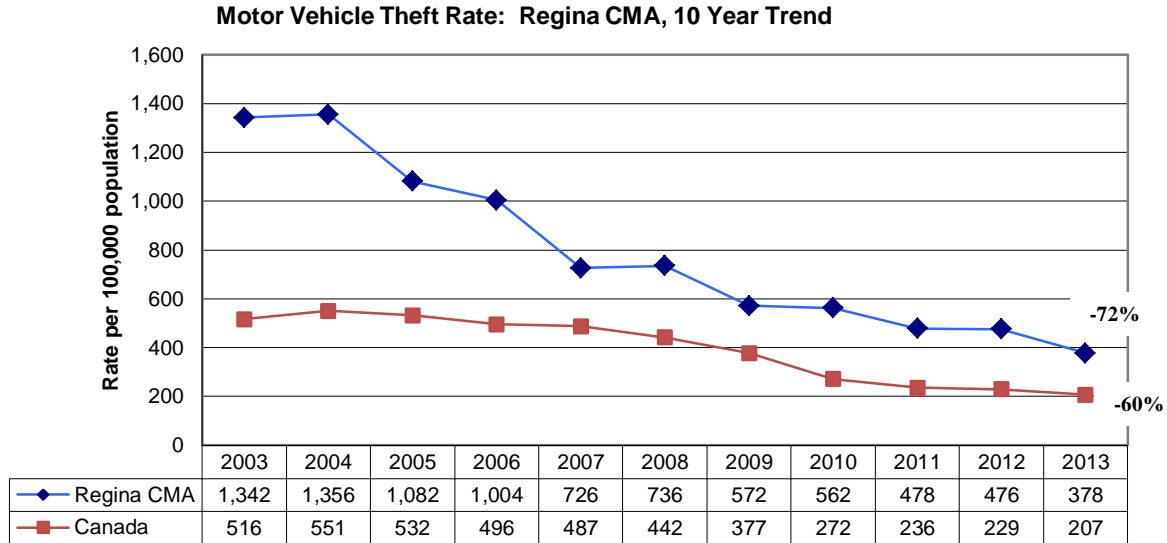
The Regina CMA ranked second in the rate of break and enter compared to 33 other CMA's, as well as second highest compared to some western CMA's.

**Rate of Break and Enter for Western CMA's, 2013**

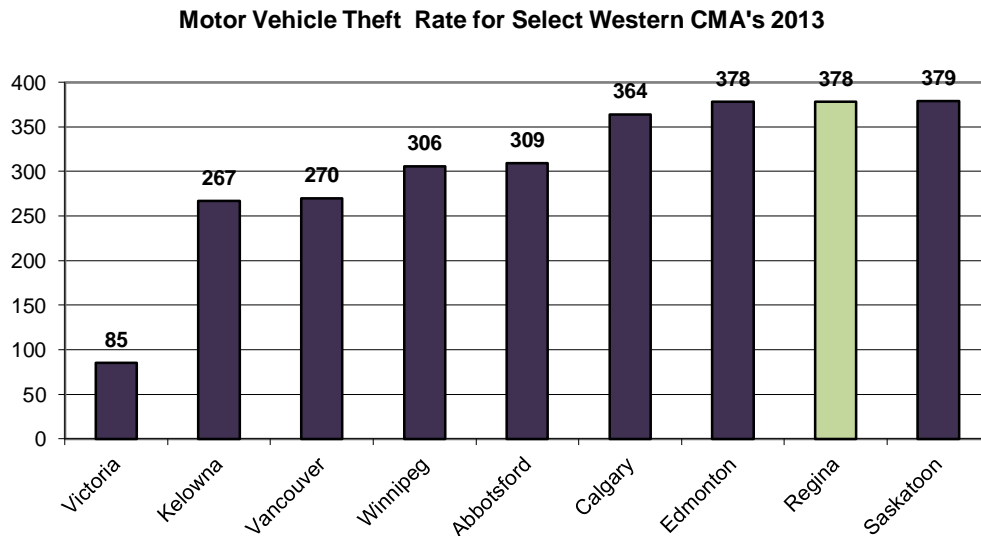


## Motor Vehicle Theft

The rate of Motor Vehicle Theft from 2012 to 2013 decreased by **21%**, and **-72%** since 2003. The year 2013 showed the lowest rate of motor vehicle theft since 1991.



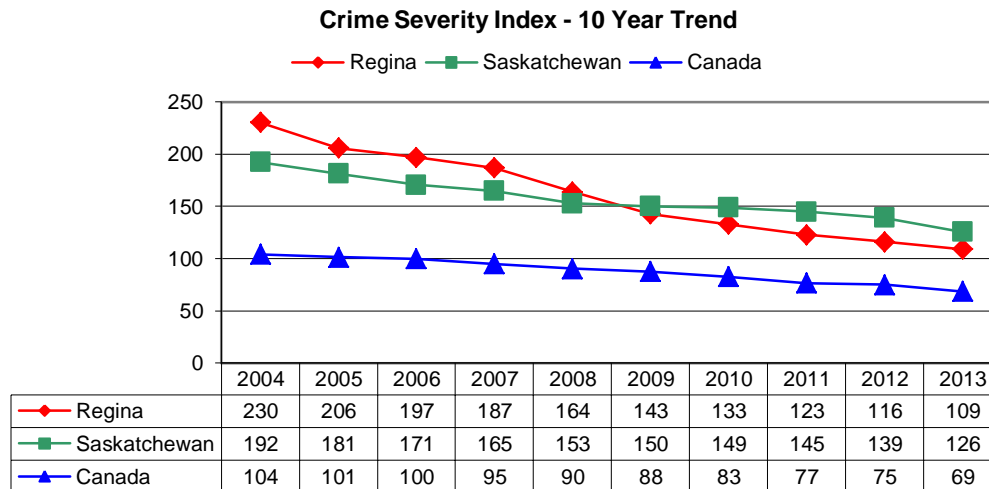
Despite these successes the rate of Motor Vehicle Theft in the Regina CMA tied for the second highest rate in the country in 2013 as well as tied for the second highest rate among select western CMA's.



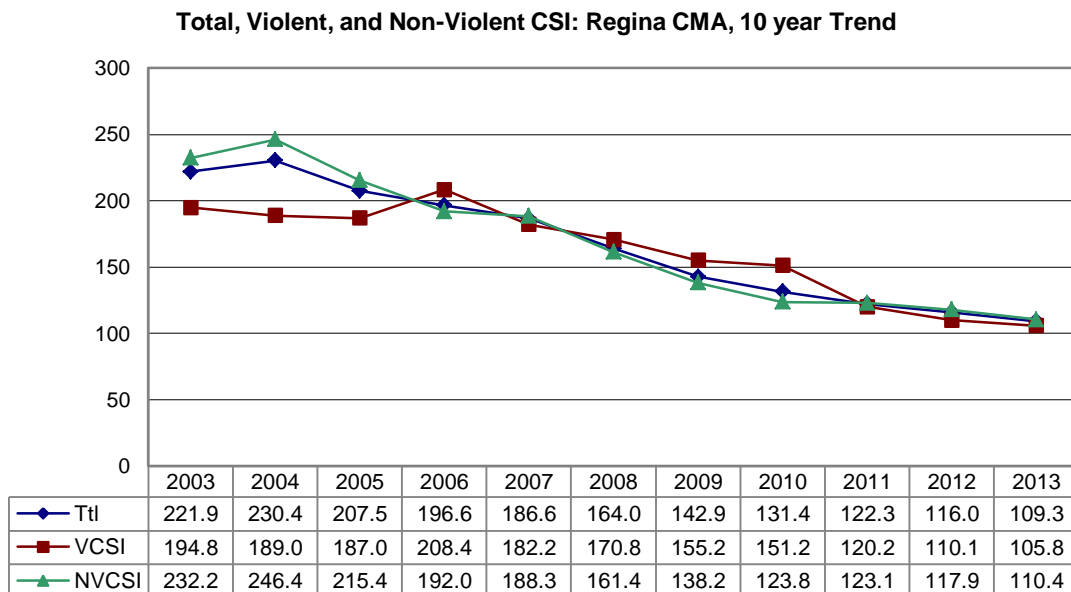


## Crime Severity Index

Over the last decade, the Police Reported Crime Severity Index (PRCSI) for the Regina CMA has decreased by 53%, compared to -35% in Saskatchewan and -34% in Canada.



Despite reporting the highest total crime severity and non-violent crime severity in Canada, Regina reported the fourth highest violent crime severity in the country from 2012 to 2013.



Among the top contributors to the decrease in total the Crime Severity Index for the Regina CMA include Break and Entering, Robbery, and Theft of \$5000 or under.

The top drivers to the total Crime Severity Index in 2013 were Robbery, Fail to Stop or Remain, Motor Vehicle Theft and Breaking and Entering. The top drivers of the Violent Crime Severity Index in 2013 were Robbery, Assault level 1 and 2, Manslaughter, and Discharge Firearm with Intent. Fail to Stop or

Remain, Motor Vehicle Theft, Break and Enter, and Fail to Appear were drivers of the Non Violent Crime Severity for the Regina CMA in 2013.

Some of the top contributors to the total crime severity index for the Regina CMA have already been recognized and are currently being addressed through strategies at the Regina Police Service. These include break and enter offences and robbery.

The long term trend of Total Crime Severity indicates that the Regina CMA has experienced the third highest reduction in the country since 2003. Only Abbotsford and Saskatoon showed larger reductions.

The reduction of -51% in total Crime Severity in the Regina CMA greatly exceeded the reduction of 36% experienced in Canada.

